

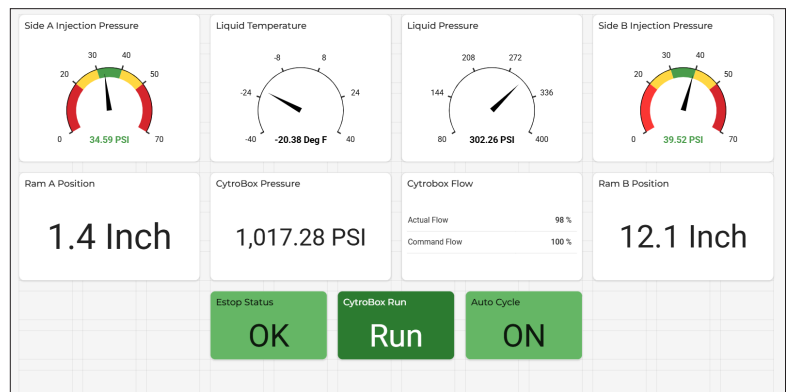
OptiPellet 100

Tomco Systems' OptiPellet 100 produces pellets from 1/8" (3mm) to 3/8" (9mm) utilizing our new hybrid hydraulic system reducing noise by 50% and power consumption by 80% saving you money and helping create a safer work environment.

Benefits

- Real Time Diagnostics
- IOT Web Monitoring
- Reduced OPEX
- Reliability

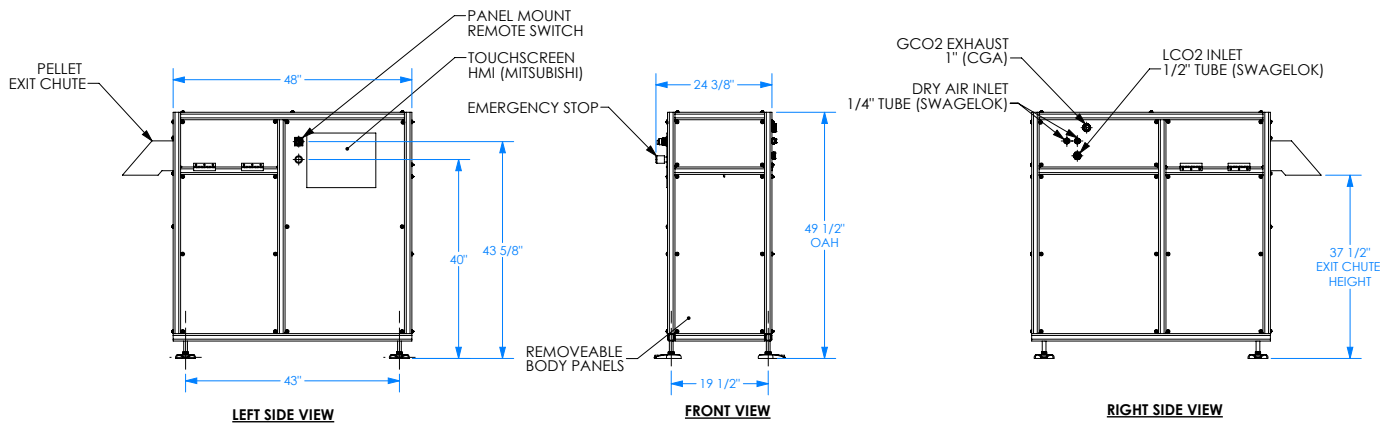
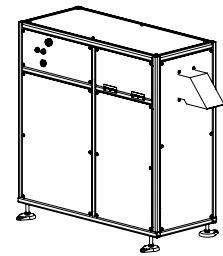
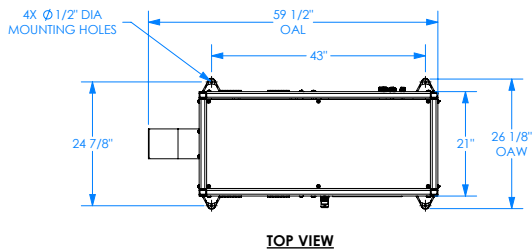
OPTIMAL VOLUME - OPTIMAL CAPACITY - OPTIMAL EFFICIENCY



OptiPellet 100

Production (lb/hr)	100
Dimensions (WxDxH)	26 x 58 x 50 in (660 x 1473 x 1270 mm)
Exit Chute Height	37.5 in (593 mm)
Decibels	< 80 dB
Electrical	220 VAC, 3 Phase, 60 Hz
Rated Current	30 A
Average Power Consumption	7 kw (9 he)
Die Sizes	1/8 in, 3/8 in
Liquid CO2 Inlet	1/2 in
CO2 Vapor Inlet	1/4 in
Exhaust Piping	1 in
Max Recovery Back Pressure	8 PSI

GENERAL ARRANGEMENT, MP-100 PELLETIZER AWE SPEC



* Liquid and exhaust piping are critical to proper operation. Contact your Tomco representative for support.

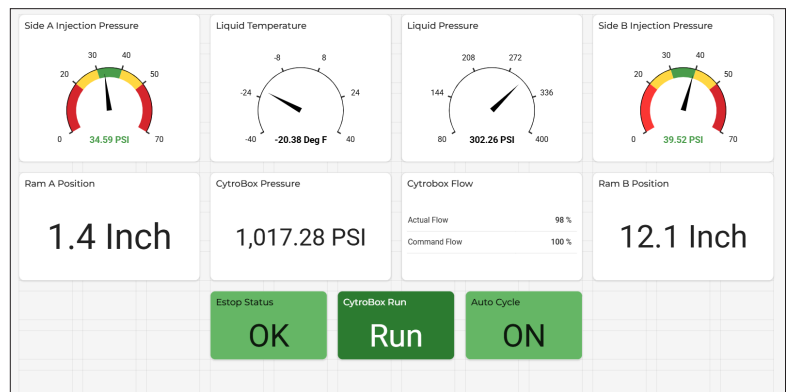
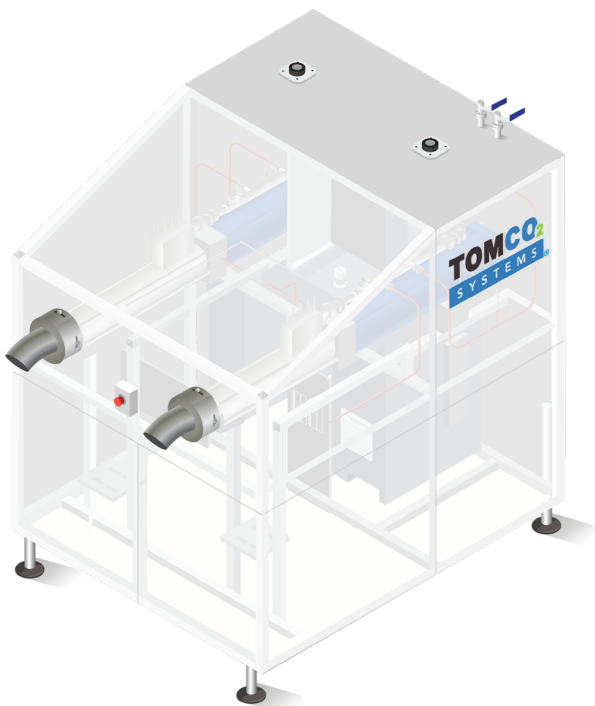
OptiPellet 1000 & 1500

Tomco Systems' OptiPellet line produces pellets from 1/8" (3mm) to 3/4" (19mm) utilizing our new hybrid hydraulic system reducing noise by 50% and power consumption by 80% saving you money and helping create a safer work environment.

Benefits

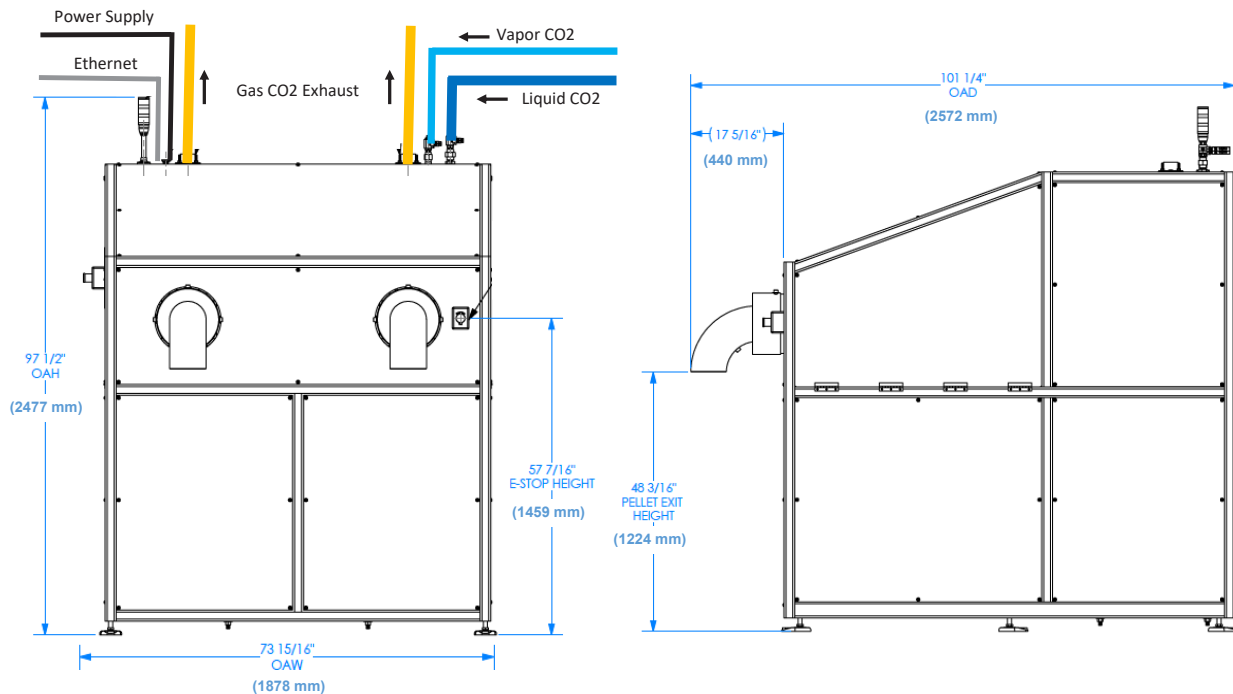
- Real Time Diagnostics
- IOT Web Monitoring
- Reduced OPEX
- Reliability

OPTIMAL VOLUME - OPTIMAL CAPACITY - OPTIMAL EFFICIENCY



OptiPellet 1000 & 1500

Production (lb/hr)	1,000	1,500
Dimensions (WxDxH)	74 x 101 x 98 in (1880 x 2566 x 2489 mm)	
Exit Chute Height	48.5 in (1232 mm)	
Decibels	< 80 dB	
Electrical	480 VAC, 3Phase, 60 Hz	
Rated Current	30 A	
Average Power Consumption	7 kW (9 hp)	
Die Sizes	1/8", 1/4", 3/8", 9/16"	1/4", 3/8", 3/4"
Liquid CO2 Inlet	3/4 in	
CO2 Vapor Inlet	1/4 in	
Exhaust Piping	2 in	
Max Recovery Back Pressure	8 PSI	



* Liquid and exhaust piping are critical to proper operation.
Contact your Tomco representative for support.